



EZ Glaze™

Glass-like Profiled Polycarbonate Sheet



Overview

Ez Glaze™ offers smart design, elegant glass-like appearance, versatility, low maintenance and sustainable performance.

Ez Glaze™ incorporates a proprietary profiled design which enables it to be installed over rafters & purlins with a high loading capacity.

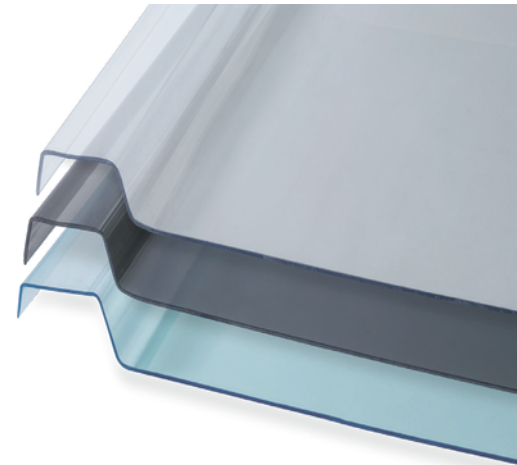
Ez Glaze™ is easy to fasten; the panels are simply screw fixed to the supportive structure and joined by overlapping.

Enjoy natural daylight and comfort with outstanding design and finish.

www.palram.com.au

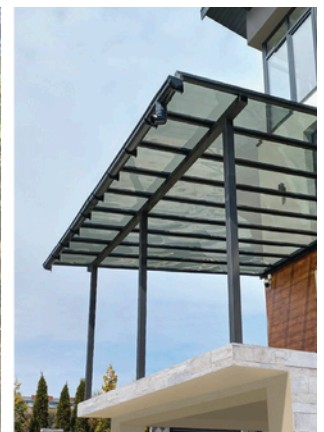
Main Benefits

- Lightweight & easy to install
- Fits directly over rafters
- Clear and elegant glass appearance
- Hail & Impact resistant
- 99.9% UV Protection
- Minimal maintenance
- Extra durable

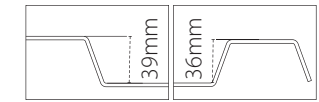
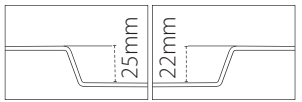


Typical Applications

- Pergolas and gazebos
- Patio enclosures
- Sunrooms
- Carports




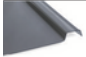

Profile range

Profile	Rafter width	Profile height	Low profile height
EZ Glaze 50	40-50mm		

Minimum roof pitch

Ensure that your roof pitch is at least 3 degrees. This will ensure adequate water run off.

Colour Range

Color	LT (%)	SC*	SHGC**
Clear 	90	1.0	0.86
Grey 	20	0.51	0.44
Breeze 	70	0.61	0.53

*Shading Coefficient

**Solar Heat Gain (SHGC)

Additional colours are available subject to MOQ.

Loads Resistance

Wind Uplift: 2.0 Kpa

Wind Load: 4.0 Kpa

Tested to comply with AS4040.1

* Maximum recommended single unit length is 7,000mm

Product Availability

Thickness	3 mm
Cover Width	600 mm
Total Width	673 mm
Maximum Length	7,000 mm

Flammability

EZ Glaze™ complies with the most demanding international fire resistance standards in the field of plastic.

AS9705- Group 1 AS1530.3- Ignitability- 0, Spread of Flame- 0, Heat Index- 0, Smoke- 2.

*For more detailed information please contact your Palram distributor.



Warranties only apply to installations and maintenance that follow Palram installation instructions and specifications.



PALRAM SA/NT
517A Cross Keys Road
Cavan SA 5094
Tel: (08) 8262 2288
Fax: (08) 8262 3388
salesa@palram.com

PALRAM NSW/ACT
Unit 2, 26 Redfern St.
Wetherill Park, NSW 2164
Tel: (02)8788 6100
Fax: (02) 8788 6199
salesnsw@palram.com

PALRAM QLD
Unit 9C / 380 Bilsen Road
Geebung QLD 4034
Tel: (07) 3172 5581
Fax: (07) 3172 5516
salesqld@palram.com

PALRAM VIC/TAS
34 Buys Court
Derrimut VIC 3030
Tel: (03) 9219 4444
Fax: (03) 9219 4455
salesvic@palram.com

PALRAM WA
74 Christable Way
Landsdale WA 6065
Tel: (08) 9302 4173
Fax: (08) 9302 5287
saleswa@palram.com



87733 - 122023

In as much as Palram Industries has no control over the use to which others may put the material, it does not guarantee that the same results as those described herein will be obtained. Each user of the material should make his own tests to determine the material's suitability for his own particular use. Statements concerning possible or suggested uses of the materials described herein are not to be construed as constituting a license under any Palram Industries patent covering such use or as recommendations for use of such materials in the infringement of any patent. Palram Industries or its distributors cannot be held responsible for any losses incurred through incorrect installation of the material. In accordance with our company policy of continual product development you are advised to check with your local Palram Industries supplier to ensure that you have obtained the most up to date information.

